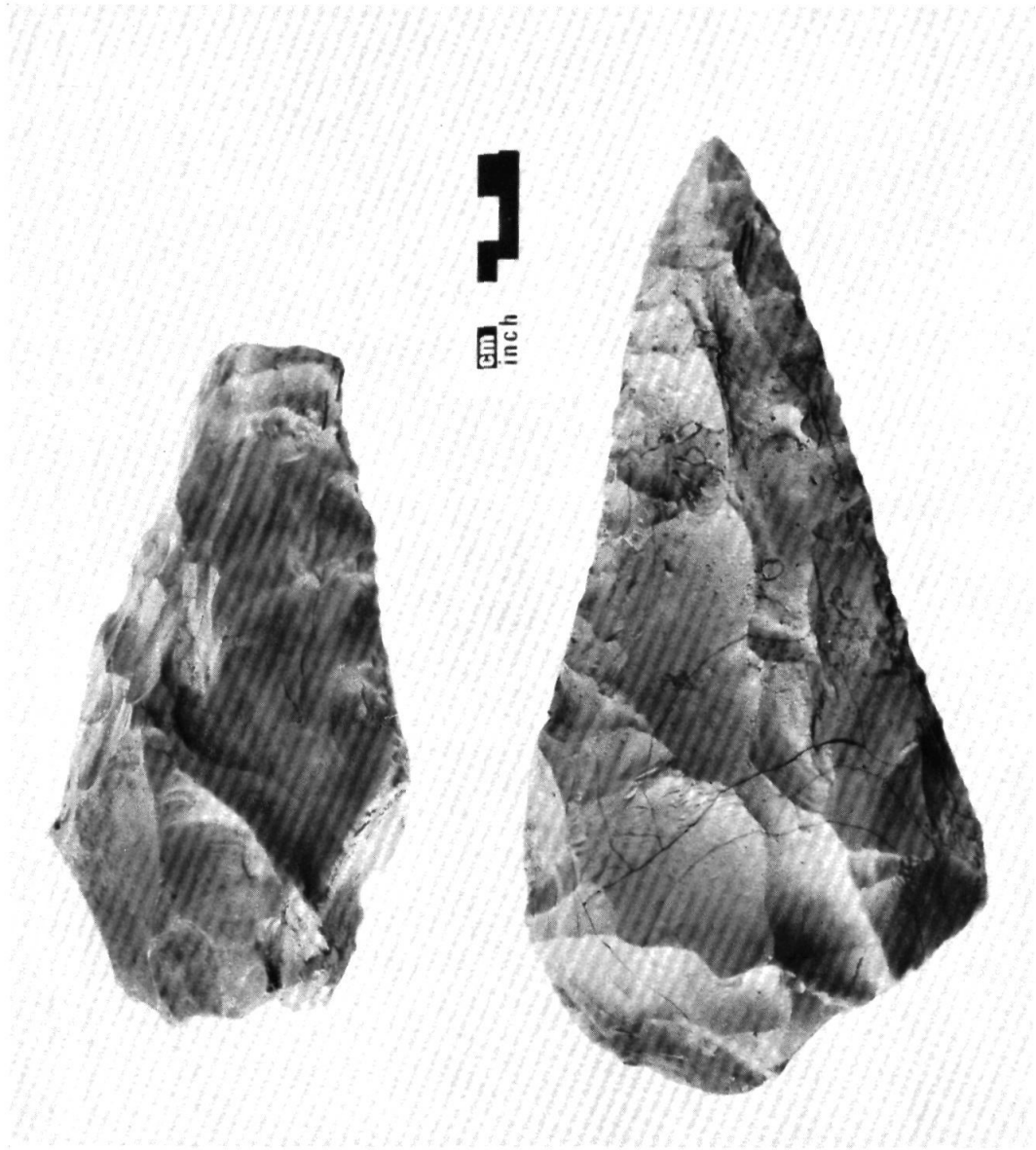
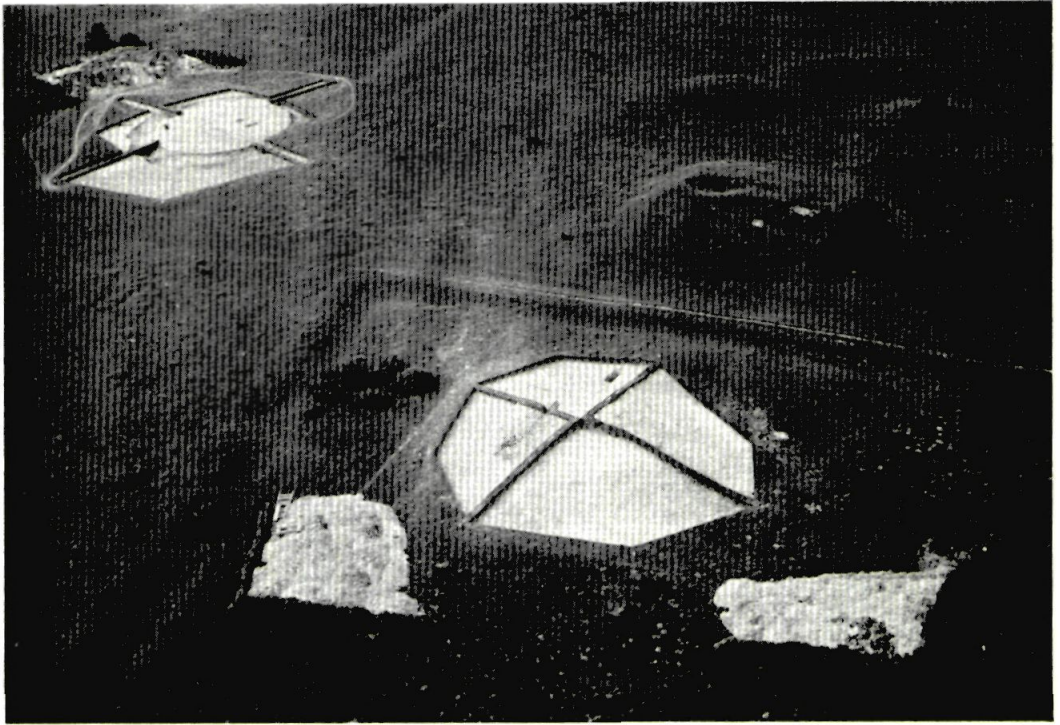


PLATE I

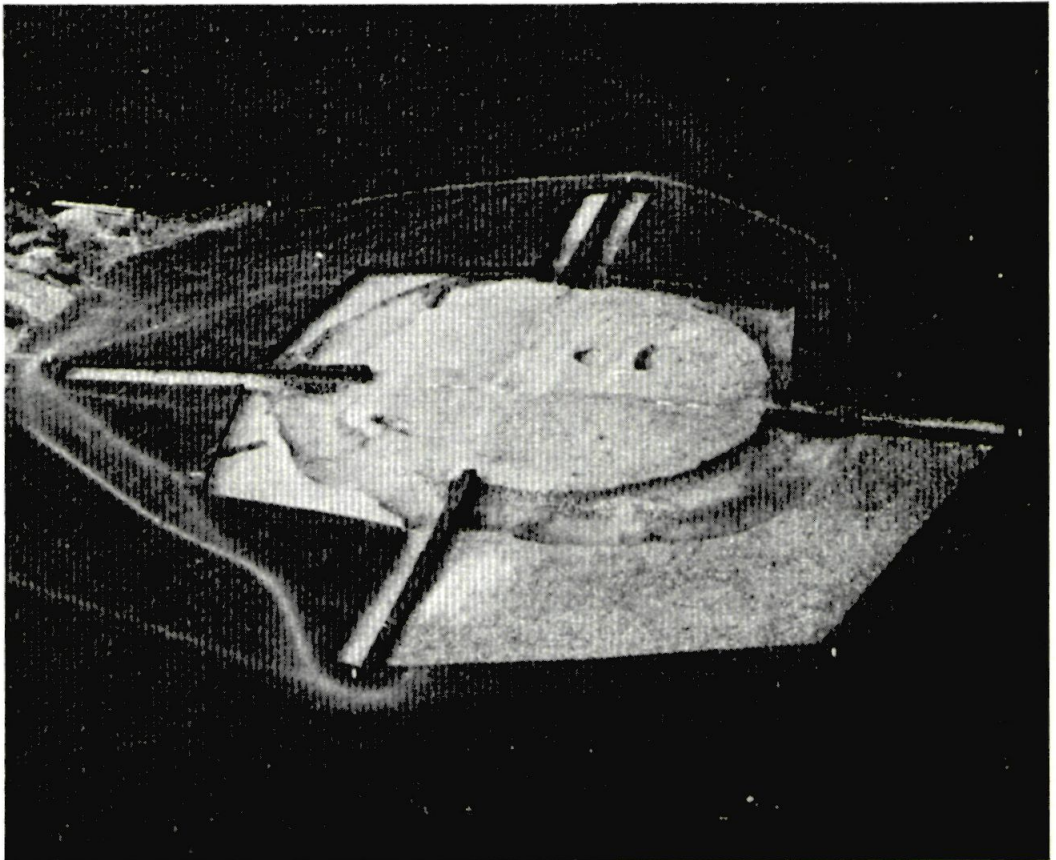


Flint handaxes from Osborne Road, Warsash. (*Photo: M. L. Shackley.*)

PLATE II

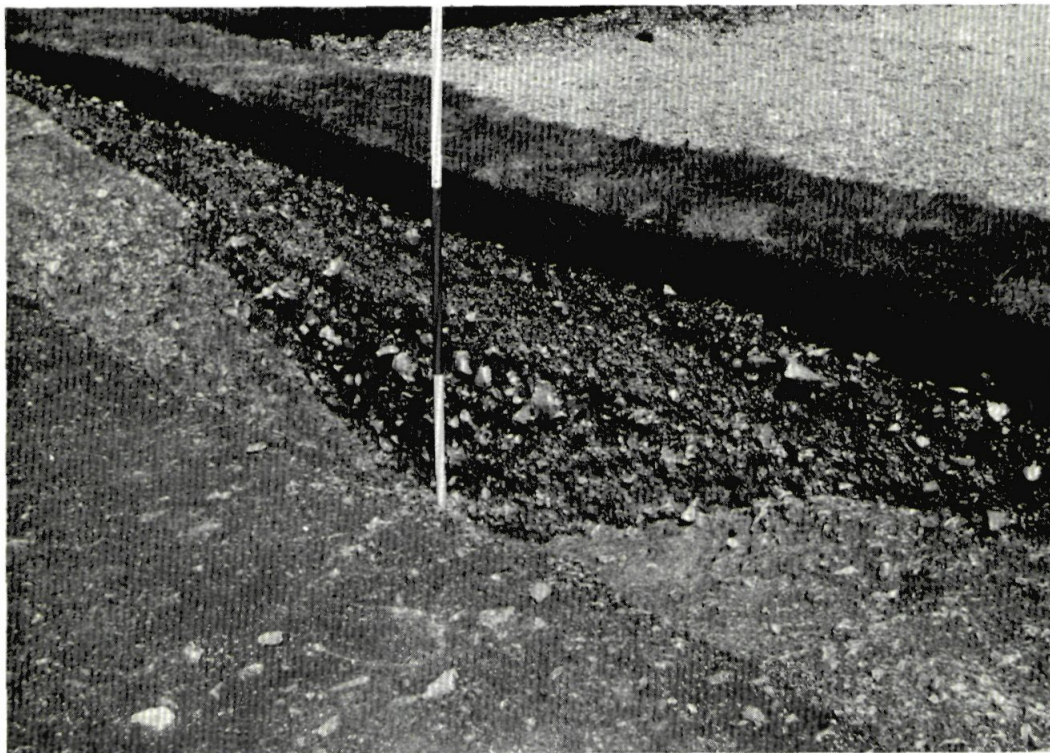


(a) Ashey Down, 1969. Barrows 8 and 9 from the south-east. (*Photo: P. Sandiford.*)

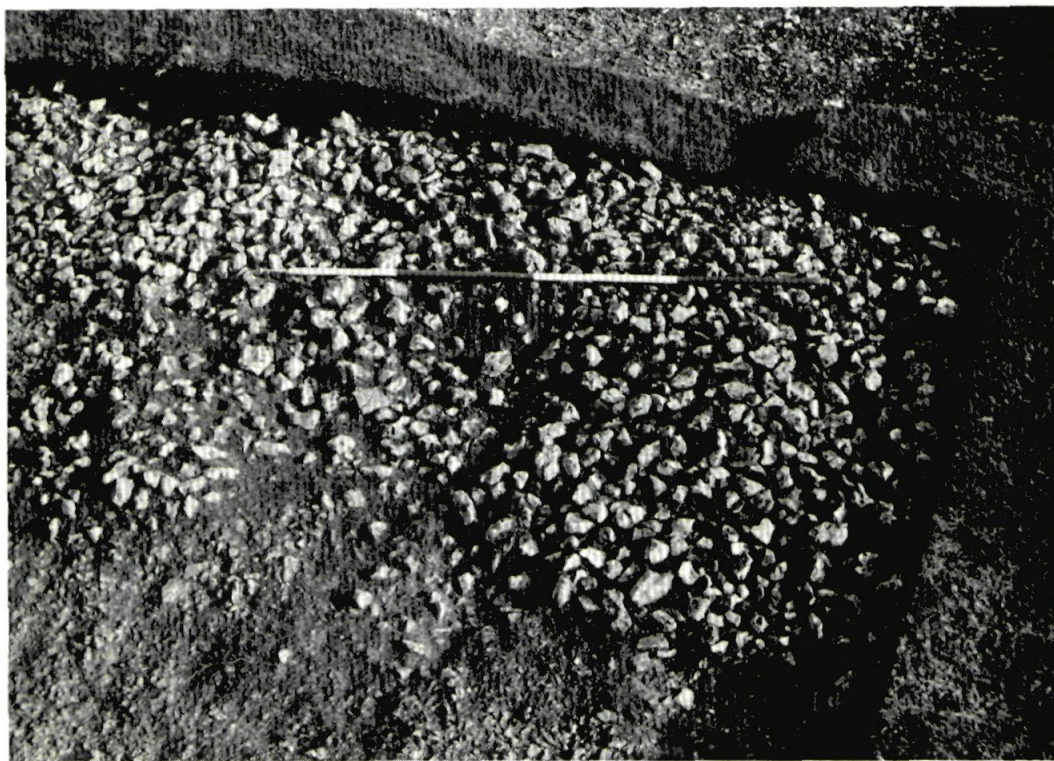


(b) Ashey Down, 1969. Barrow 8 from the south-east. (*Photo: P. Sandiford.*)

PLATE III

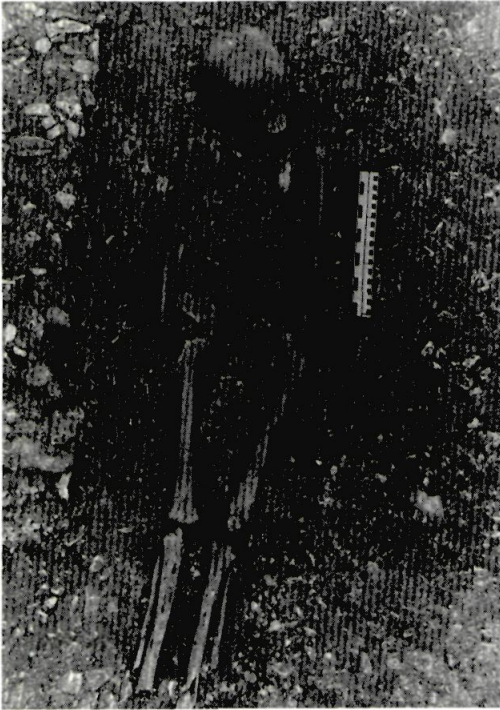


(a) Ashley Down, 1969. Barrow 8. Ditch section on west edge of barrow. Scale in 50 cm intervals.
(Photo: P. Drewett.)

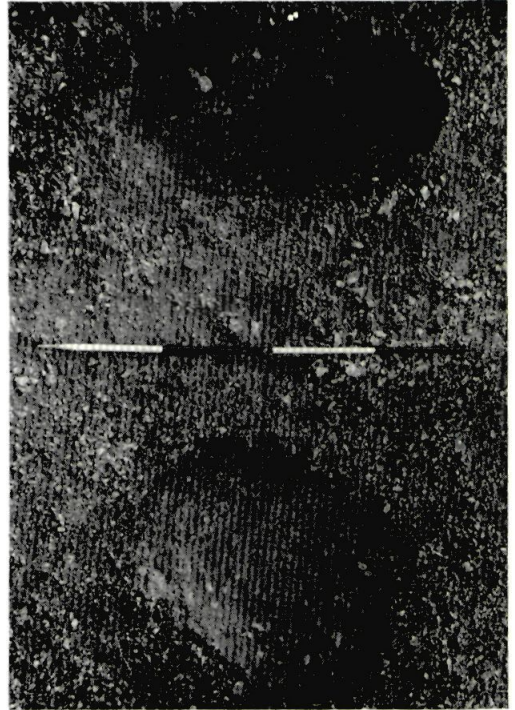


(b) Ashley Down, 1969. Barrow 9. Flint capping in north-east quadrant. Scale: 2 metres.
(Photo: P. Drewett.)

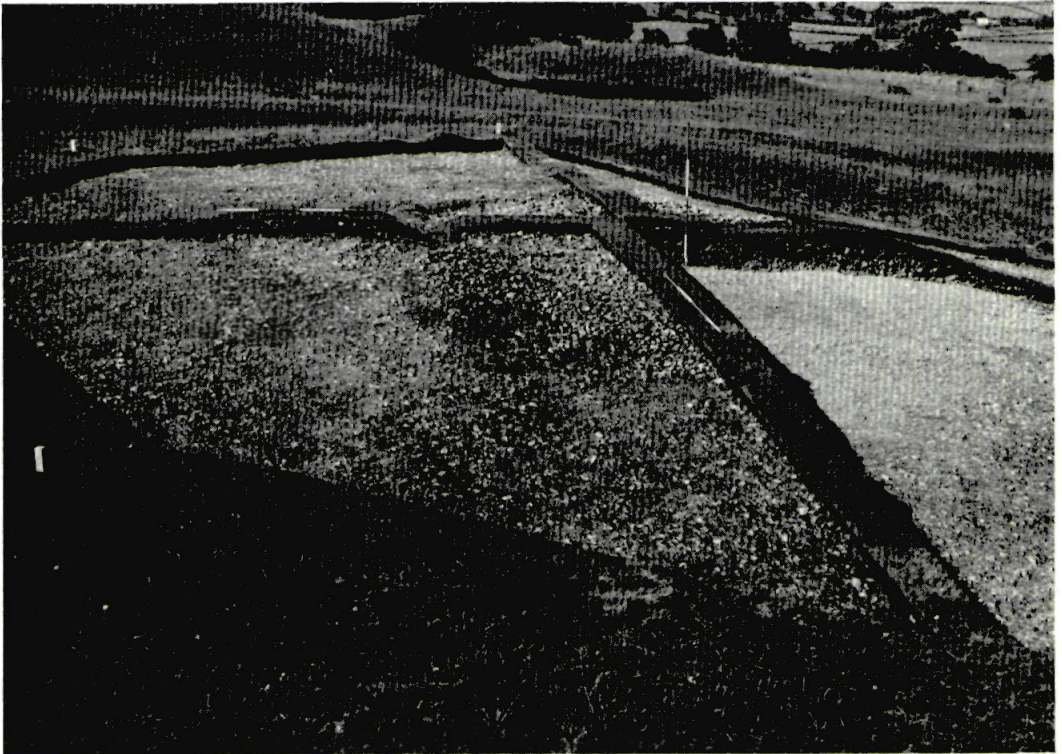
PLATE IV



(a) Asheby Down, 1969. Barrow 9. Romano-British secondary inhumation. Scale: inches and centimetres. (Photo: P. Drewett.)

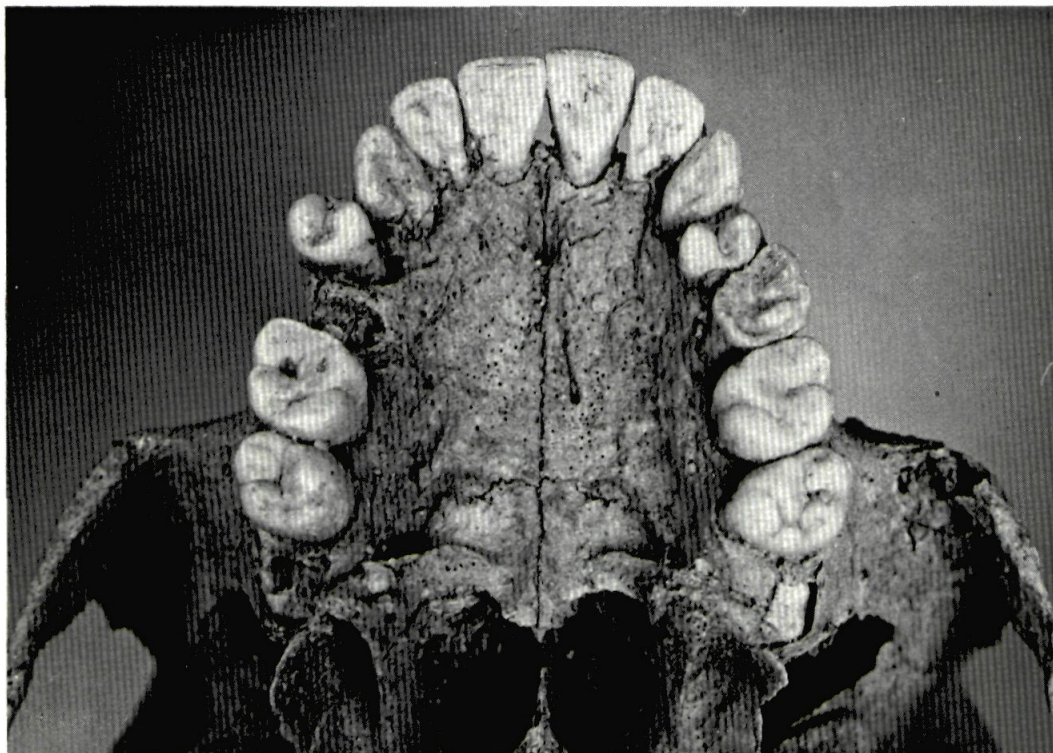


(b) Asheby Down, 1969. Barrow 8. Pits beneath barrow. Scale: 2 metres. (Photo: P. Drewett.)



(c) Asheby Down, 1969. Barrow 9. View from south showing erosion of east side. Scale: 2 metres. (Photo: P. Drewett.)

PLATE V



(a) Asheby Down, 1969. Barrow 9. Secondary inhumation. Palate showing worn second pre-molar and posteriorly erupting third molars. (*Photo: P. Sandiford.*)



(b) Asheby Down, 1969. Barrow 9. Secondary inhumation. Lower dentition showing retention of left second deciduous molar. (*Photo: P. Sandiford.*)

was boed þe northe byrken þe boundes of crondale and schulle þat bi folber and drenti souden
 Dage yden in kyng Richardes daye first on perbride southward forþ to þe drye þat fereþer by þe
 nepleseburne þanne fram tharaplesburne southward to Skoudorne þanne fram Skoudorne southward
 to farnham fram farnham to þe jellare of þe bydemere by northe vpenbelhate þanne fram þe jellare
 to enobotelcrouche fram enobotelcrouche forþ to bydemere fram bydemere forþ to wembaghe fram
 wembaghe forþ in to perchpote þanne forþ to þe thallhyngepoul þanne so forþ fram þe thallhyngepoul
 in to holdbedenclene fram holdbedenclene to bylegatelcrouche fram bylegatelcrouche northward to gavel
 forþpole fram gavelforþpole andlang hages to purmorethorne fram purmorethorne andlang hages
 to threlanende fram threlanende andlang hages to colchache fram colchache andlang hages by southe þe þe
 reþeche to couchemerþe þanne andlang hages southward to colerlebrass þanne andlang herpache to
 northdon þanne forþ by þe hages to Seuenages þanne andlang Seuenages to þe Rudefelde þanne andlang
 hages to þe herpache so forþ to þe Rudegate fram Rudegate to þe Sandpente fram þe Sandpente to que
 buche fram wemburgh forþ rishæ to burebyrþelende þanne fram burebyrþ forþ rishæ to fymmedell
 and bydedene ende þanne forþ by þe Smaledene northward by þe ferþedone to þe greuedre þanne forþ
 rishæ to flegathorne þanne forþ rishæ to poberþe northward by þe boundes of þe lordshipes of far
 neburst crondale and schulle forþ rishæ to Scapelmene þanne forþ rishæ to triandelmene þanne forþ
 rishæ ouer the hulle of hachdone þanne forþ rishæ to smalethorloþ þanne forþ rishæ in to duddeþouþ

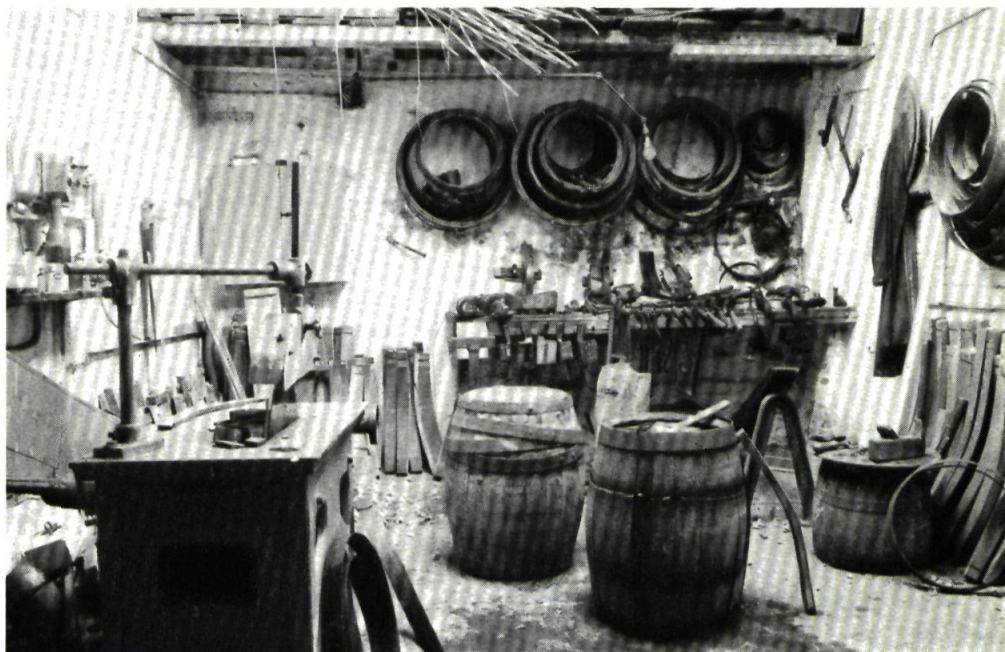
BOUNDARIES OF ITCHELL AND CRONDALL, HANTS
 from the Cartulary of Winchester Cathedral Priory. (Photo: British Museum.)

PLATE VII

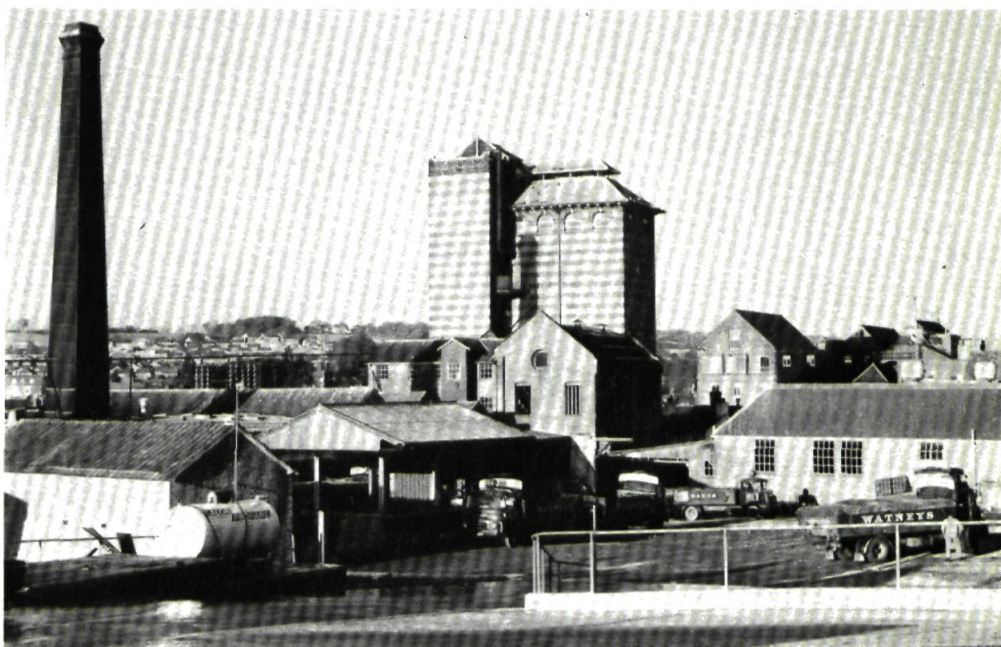


WINCHESTER BREWERY (60)

PLATE VIII

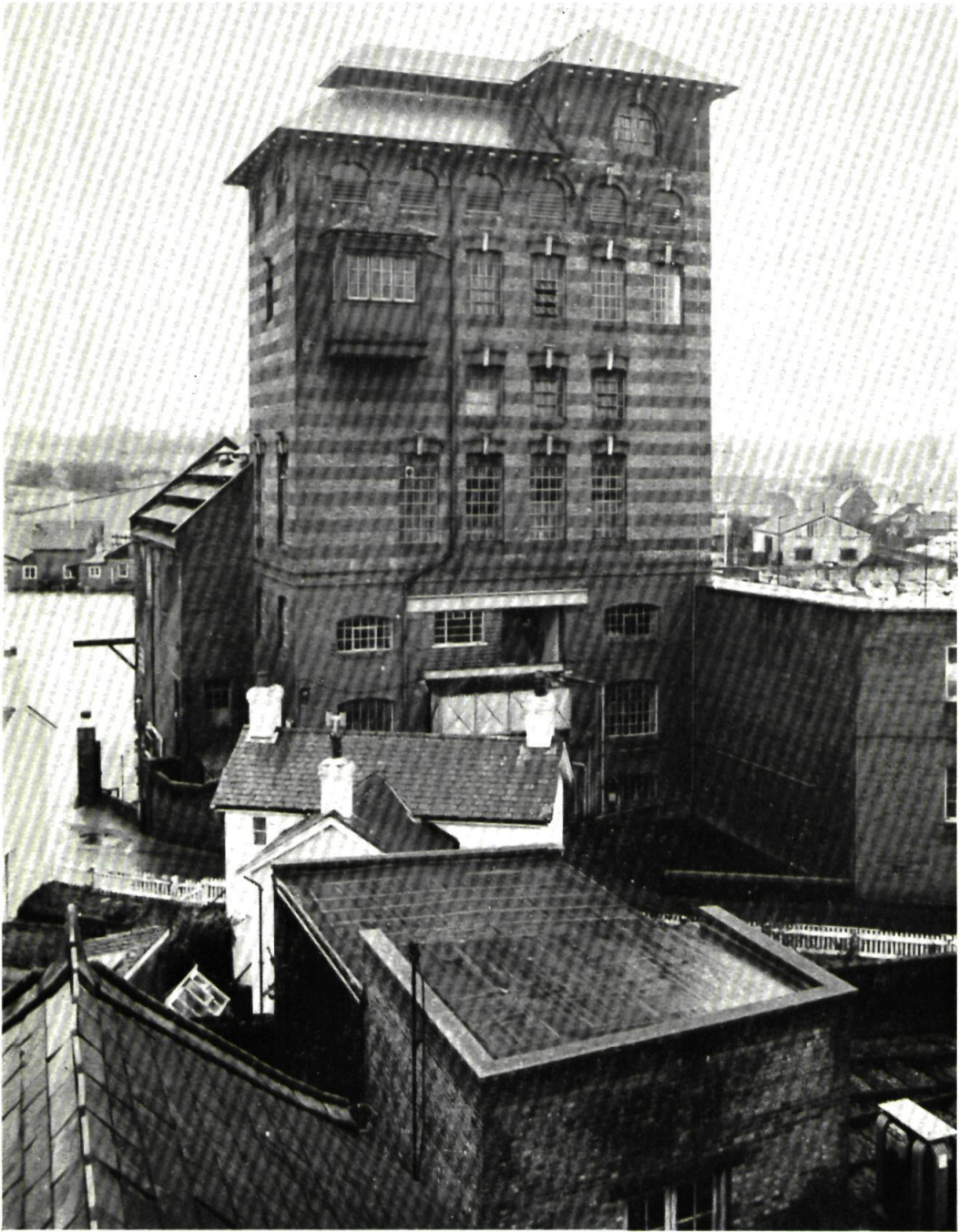


HORNDEAN: GALE'S BREWERY (18). The Cooperage



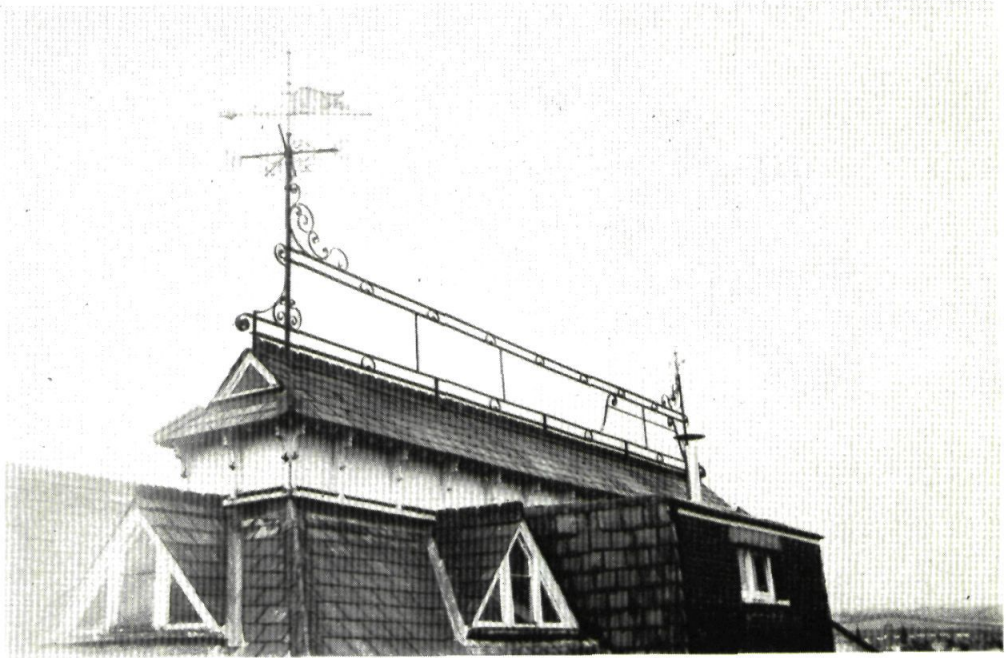
ALTON: WATNEY'S BREWERY (3); COURAGE'S BREWERY (2) right background

PLATE IX

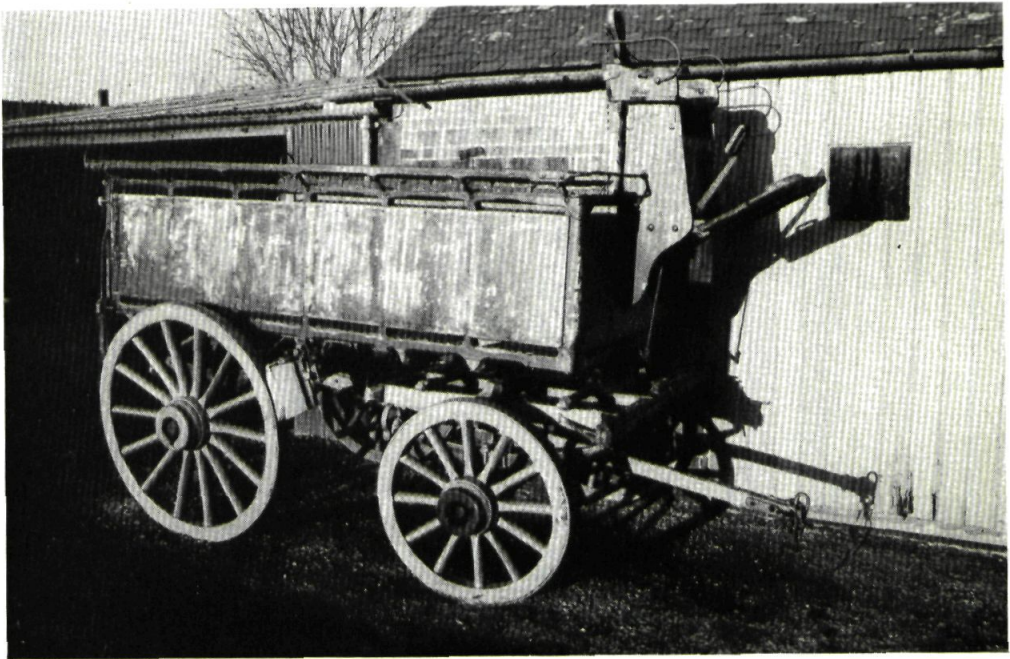


ALTON: WATNEY'S BREWERY (3) Brewhouse Tower; foreground, loading dock
of Courage's brewery (2)

PLATE X



ALTON: COURAGE'S BREWERY (2); cold liquor tank and weathervane



ALTON: COURAGE'S BREWERY (2); horse dray

PLATE XI

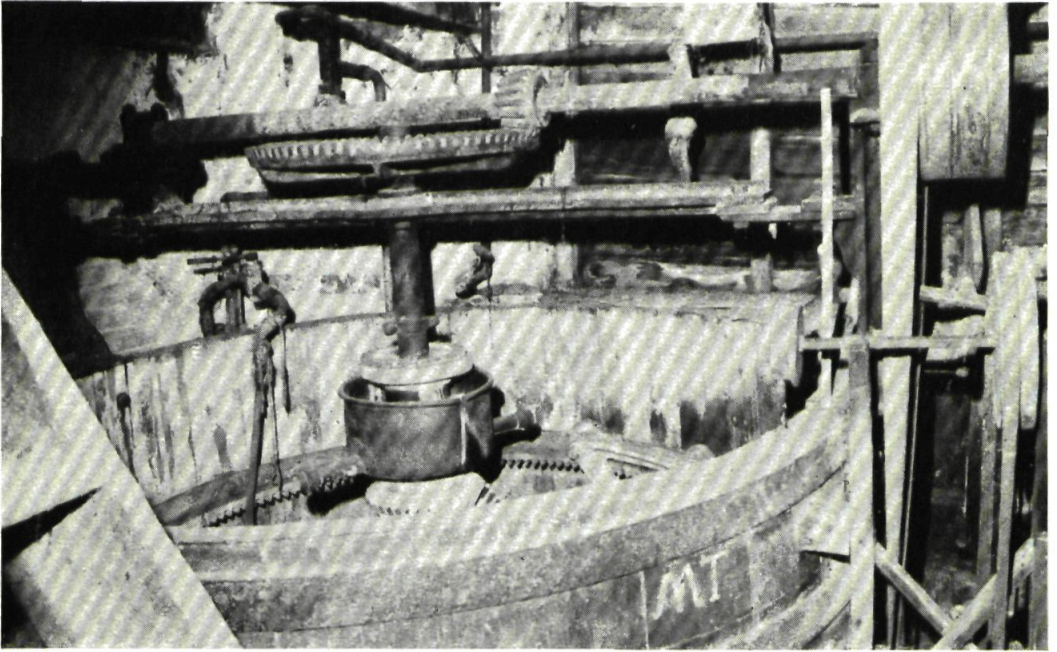


ALTON: WATNEY'S BREWERY (3); Roof of malting

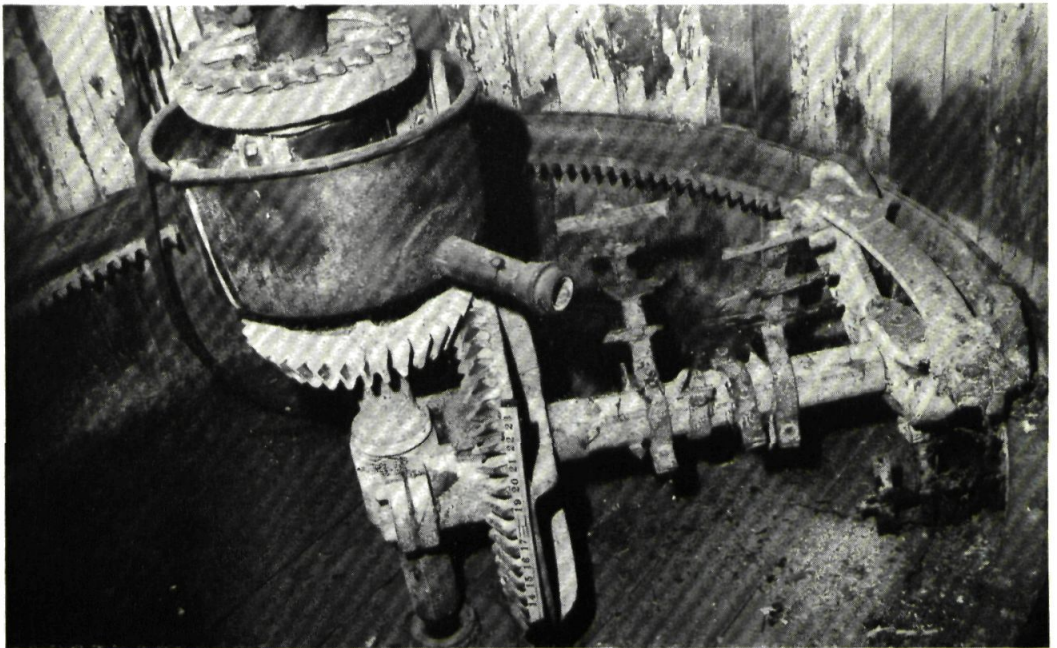


SOUTHWICK: GOLDEN LION BREWERY (49); Brewhouse (centre)

PLATE XII



SOUTHWICK: GOLDEN LION BREWERY (49); The mash tun



SOUTHWICK: GOLDEN LION BREWERY (49); The mash tun